



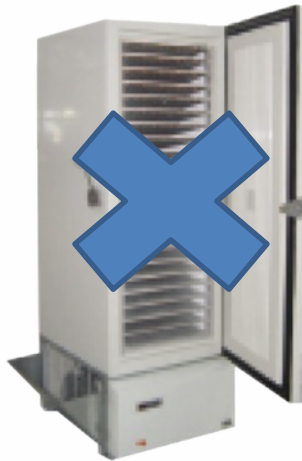
Blood Bags

Already an innovator and leader in the design and development of temperature controlled protective packaging; Polar now offers a new concept in the transportation of whole blood.

This innovative solution has already been recognised by members of the EBA and other Blood organisations globally who are now considering the cost savings that can be made by following the UK NHSBT model. The blood bag is designed for whole blood collection to be transported to the processing centre without the need for heavy eutectic plates or other external appliances



Polar Thermal Packaging Limited is a UK manufacturing company based in Warminster, Wiltshire. We have an excellent track record in developing solutions for the medical, military and retail sectors.



Stable Temperature

Whole blood collected at 38°C will remain above 20°C when packed into the Polar Blood Bag in a room not below 16°C. The packing can be done over a 6-hour duration.

Once zipped up, the bag can then be transported to its processing destination retaining a constant temperature of above 20°C and withstanding an outside ambient temperature between of -5°C and +35°C for up to 11 hours (lab testing proved up to 18 hours)

The bag weighs only 13.5 kg when fully loaded with 10 donations and has been drop tested from 2 metres. It can be unzipped to fold down flat for easy sanitisation and storage.



Address

Crusader Business Park, BA12 8SP

Contact

01985 214111

Email

info@polarthermal.com

Website

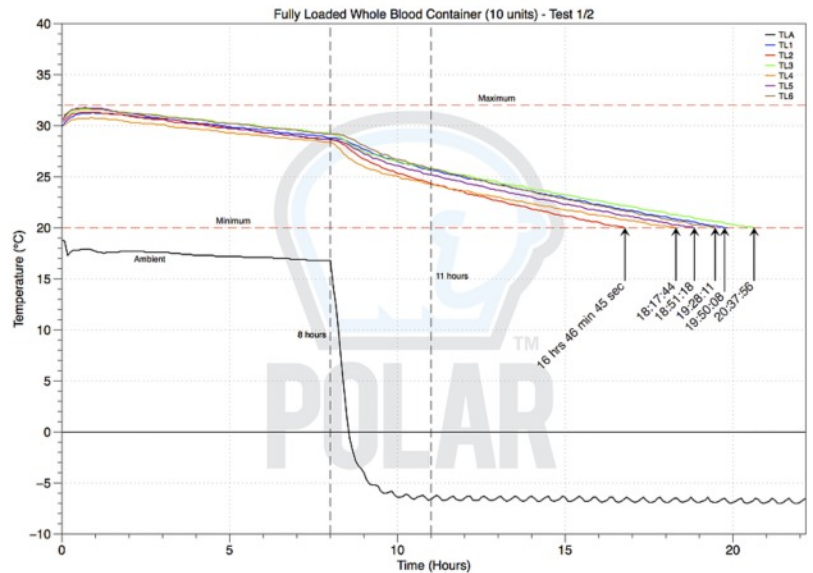
www.polarthermal.com

The National Health Blood Transfusion Service of the U.K awarded Polar Thermal Packaging a five year framework agreement to provide thermal systems for the transportation of whole blood and related products.



Features:

- Patented vent system enabling self-inflating/deflating of internal cushion to “hug” the donations
- Anti-fungal – polyester cotton
- Incorporating a stiff plastic, anti-crush membrane allowing the bags to be stacked
- Zip system allows the bags to open-up flat for easy sanitization
- Twin draft excluder
- Carry handles are double stitch-secured at a higher position to ensure that the bag is held close to chest
- Velcro tabs to allow bags to link-attach to each other, through the handles
- Ruggedized base for resistance to surface drag
- Large zips for easy grip and eyelets for anti-tamper tags



Data and testing for the bags was conducted under controlled conditions and endorsed by NHSBT quality department dated Dec 2014.

Other Blood & Plasma Products:

- Plasma & Platelet Bags
- Nurses Pouches
- Clamshell Bags
- Single Blood Bag



Want to know more?

Call 01985 214111 and speak to Paul Harrison, Head of Public Sector.

Send an email to ph@polarthermal.com, visit the website at www.polarthermal.com.

You can Google “polar thermal uk” or scan The QR Code here and go straight to our products.



Address

Crusader Business Park, BA12 8SP

Contact

01985 214111

Email

info@polarthermal.com

Website

www.polarthermal.com

